

LED BUS LIGHTING

TLM SERIES - PREMIUM SAVER T12 SIZE



NOTES & PATENT INFORMATION

US Patent #7,307,391 8,115,411 8,791,650
 9,179,513
 Canada Patent #2,651,224 2,555,065 2,831,641
 International Patents Pending
 For complete and up to date patent information see
 our website

OPTIONAL FEATURES

- lengths of 24", 36", 48"
- Colors: Warm White, Blue, other colors upon request
- Operational voltages for special applications
- Bi-Pin types

DESCRIPTION

The LED Lighting tube has been designed to work with conventional fixtures to replace the short lived fluorescent lamps. This product is typically used in interior bus lighting.

The LED tube can be used to retrofit existing fluorescent installations or for any new install.

The Premium lamps are designed to have an equal appearance and higher performance in any transportation application when compared to, fluorescent lamps.

FEATURES

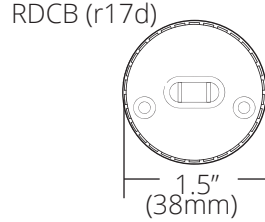
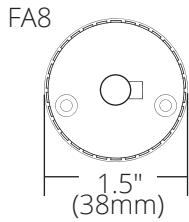
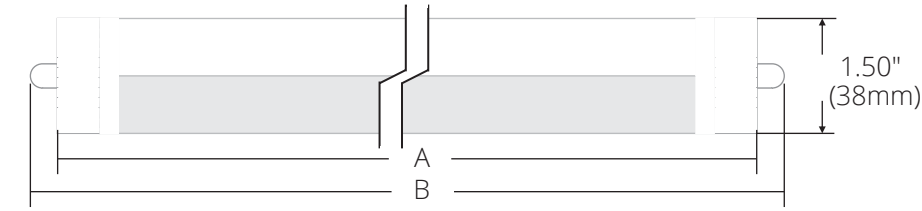
- Solid state lighting device, works well in harsh environments of hot or cold temperatures
- Instant on, no warm up time
- Lasts at least 10 times longer than fluorescent
- NO EMI emissions, to eliminate radio interference
- Design to replace conventional fluorescent lamps
- Lead Free Compliant, Mercury Free
- Vibration proof features

STANDARD FEATURES

- 60" and 72" lengths
- Cool White LEDs
- 24V Operating Voltage
- Double Frosted lens
- Single Pin, Instant start connection type

DIMENSIONS

T12 Diameter (Side View)



| Standard Length | A | | B | | Finished Weight | |
|-----------------|-------|--------|--------|--------|-----------------|------|
| | Inch | cm | Inch | cm | T12 | |
| 24 | 21.18 | 538.0 | 21.825 | 554.4 | g | lbs |
| 36 | 33.18 | 842.8 | 33.825 | 859.2 | 380 | 0.84 |
| 48 | 45.18 | 1147.6 | 45.825 | 1164.0 | 540 | 1.19 |
| 60 | 57.18 | 1452.4 | 57.825 | 1468.8 | 732 | 1.61 |
| 72 | 69.18 | 1757.2 | 69.825 | 1773.6 | 923 | 2.03 |
| | | | | | 1115 | 2.46 |

ELECTRICAL STATS & OPERATING FUNCTIONS

| Type | Nominal Length (inch) | Input Voltage (DC Volts) | Lens Type | High Intensity (100% Brightness) | | | Low Intensity (20% Brightness) | | |
|------------|-----------------------|--------------------------|----------------|----------------------------------|------------------------------|---------------------------|--------------------------------|------------------------------|---------------------------|
| | | | | Input Current (DC Amps) | Intensity (Estimated Lumens) | Power Consumption (Watts) | Input Current (DC Amps) | Intensity (Estimated Lumens) | Power Consumption (Watts) |
| | | | | TYP | TYP | TYP | TYP | TYP | TYP |
| COOL WHITE | | | | | | | | | |
| TLM | 24 | 24 | Double Frosted | 0.46 | 510 | 11 | 0.09 | 102 | 2.2 |
| | 36 | | | 0.71 | 742 | 17 | 0.14 | 148 | 3.4 |
| | 48 | | | 0.94 | 1021 | 23 | 0.19 | 204 | 4.5 |
| | 60 | | | 1.18 | 1299 | 28 | 0.24 | 260 | 5.7 |
| | 72 | | | 1.42 | 1578 | 34 | 0.28 | 316 | 6.8 |

ORDERING INFORMATION

| SERIES | DIAMETER | PIN TYPE | LENGTH | VOLTAGE | COLOR | LENS TYPE | FUNCTION |
|--------|----------|-----------------|--------|---------|-------------------------|--------------------------------|---------------------------------|
| TLM | T12 | X | XX | 24 | X | X | X |
| | | F = FA8 | 24* | 24V | 57 = Cool White (5700K) | D = Double Side Frosted, white | S = Single Intensity |
| | | R = RDCB (R17D) | 36* | | A = Amber* | | D = Dual Intensity (100% - 20%) |
| | | G = G13 | 48* | | R = Red* | | E = Extinguishable (100% - 0%) |
| | | | 60 | | G = Green* | | |
| | | | 72 | | B = Blue | | |

Example:

TLM-T12-FA8-72-24-C-D-D = LED Transit Light, Premium Saver, T12 Size, FA8 - Single Pin, 72" Long, 24V, Cool White, Double Frosted Lens, Dual Intensity
 * Custom order item, contact LED Smart Inc. for more details.