

## LED RAIL LIGHTING

### RLR SERIES - 37.5VDC



### OPTIONAL FEATURES

- Other lengths upon special request
- Colors: Warm White, Neutral White (other colors upon request)
- Operational voltages for special applications
- FA8 or RDCB End Types

### NOTES & PATENT INFORMATION

US Patent #7,307,391 8,115,411 8,791,650  
9,179,513  
Canada Patent #2,651,224 2,555,065 2,831,641  
International Patents Pending  
For complete and up to date patent information see our website

### DESCRIPTION

These RLR Series lamps are designed for use in the low profile train lighting fixtures. These lamps tolerate voltage spreads characteristic of light rail train car systems without fluctuating in light intensity.

The LED Lighting tube can be used in new or to retrofit fluorescent installations.

The Premium lighting systems offers customers the best in LED technology.

The patented RLR light tubes use the latest high power premium LEDs while providing a more superior, reliable and efficient light source than conventional fluorescent systems.

### FEATURES

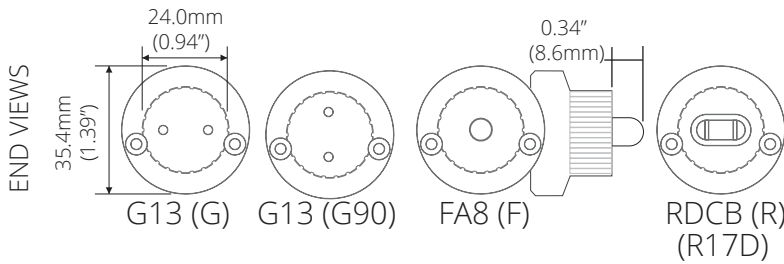
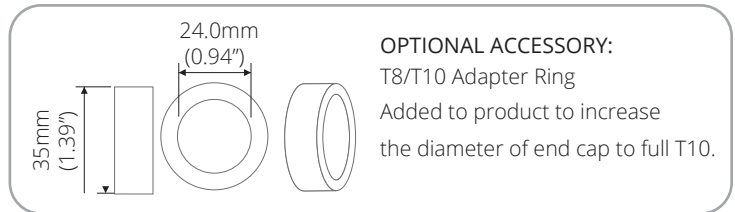
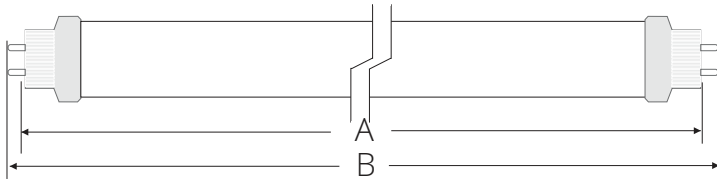
- Solid state lighting device, works well in harsh environments of hot or cold temperatures
- Instant on, no warm up time
- Lasts at least 5 times longer than fluorescent
- Low EMI emissions, to eliminate radio interference
- Design to replace conventional fluorescent lamps
- Low EMI emissions, to reduce radio interference
- Lead Free Compliant, Mercury Free
- Vibration proof features

### STANDARD FEATURES

- 24", 36", 48", 60" and 72" length
- Cool White LEDs
- 28V or 37.5V Operating Voltage
- Milk White Lens or Clear Lens
- Bi-Pin (G13), Instant start connection type
- T12 Fluorescent replacement

### DIMENSIONS

T10 DIAMETER (Shown with G13, see chart for FA8 or R17D)

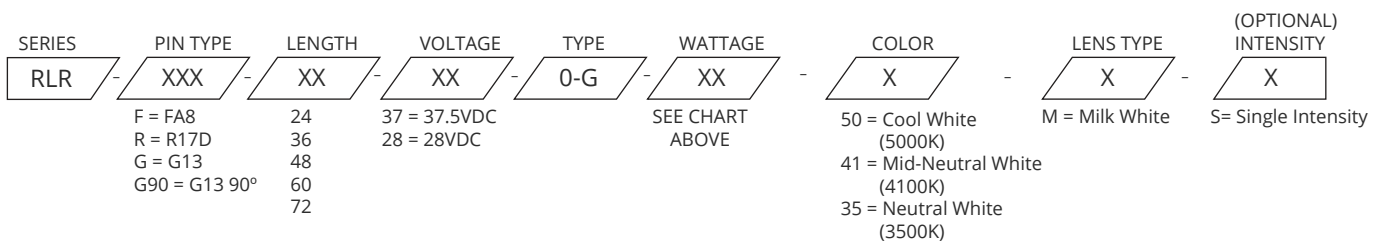


Standard Length	A		B		Finished Weight	
	Inch	cm	Inch	cm	T10	
24	21.18	538.0	21.825	554.1	g	lbs
36	33.35	847.0	34.024	864.2	380	0.84
48	45.18	1147.6	45.825	1164.0	408	0.90
60	57.18	1452.4	57.825	1468.8	544	1.20
72	69.18	1757.2	69.825	1773.6	658	1.45
					771	1.70

### ELECTRICAL STATS & OPERATING FUNCTIONS

Type	Nominal Length (inch)	Lens Type	PART CODE	Input Voltage (DC Volts)			Input Current (A)	Luminous Intensity (Estimated Lumens)			Power Consumption (Watts)
				MIN	TYP	MAX		5000K	4100K	3500K	
RLR	24"	MILK WHITE	0-G	15	28	35	0.25	789	720	712	7
	36"						0.50	1577	1441	1424	14
	48"						0.64	2028	1853	1831	18
	60"						0.82	2591	2367	2339	23
	72"						0.96	3042	2779	2746	27
	24"			24	37.5	48	0.19	771	704	696	7
	36"						0.37	1541	1408	1391	14
	48"						0.48	1981	1810	1789	18
	60"						0.61	2532	2313	2285	23
	72"						0.72	2972	2715	2683	27

### ORDERING INFORMATION



LED Smart Inc. works continually to improve our products, we reserve the right to change or modify the designs or specifications of this product at any time without prior notice. All rights reserved. This product is under a patent and patent pending protection.